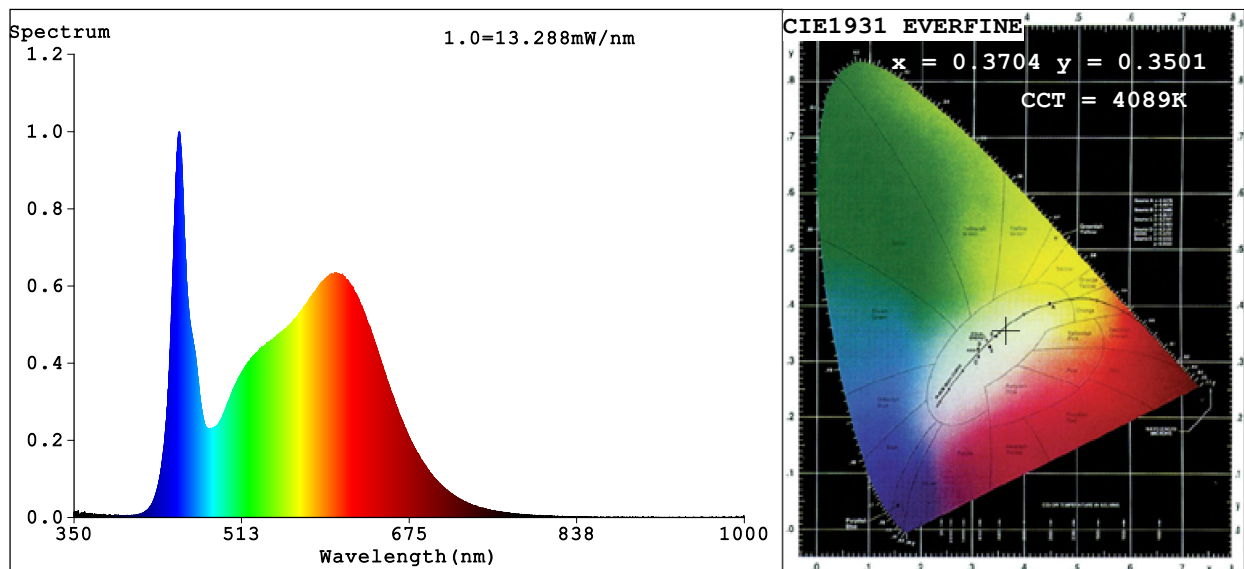


Spectrum Test Report



Color Parameters:

Chromaticity Coordinate: $x=0.3704$ $y=0.3501$ $u'=0.2294$ $v'=0.4877$

CCT=4089K (Duv=-0.0100) Dominant WL:Ld =587.9nm Purity=16.2%

Ratio:R=20.1% G=75.5% B=4.4%; Peak WL:Lp=452.2nm FWHM=18.6nm

Render Index:Ra=90.6 CRI=87.2 TM30:Rf=85 Rg=101

R1 =93 R2 =97 R3 =96 R4 =90 R5 =92 R6 =91 R7 =88

R8 =78 R9 =50 R10=91 R11=90 R12=71 R13=95 R14=98 R15=91

Photo Parameters:

Flux = 475.7 lm Eff. : 47.19 lm/W Fe = 1.578 W

Electrical parameters:

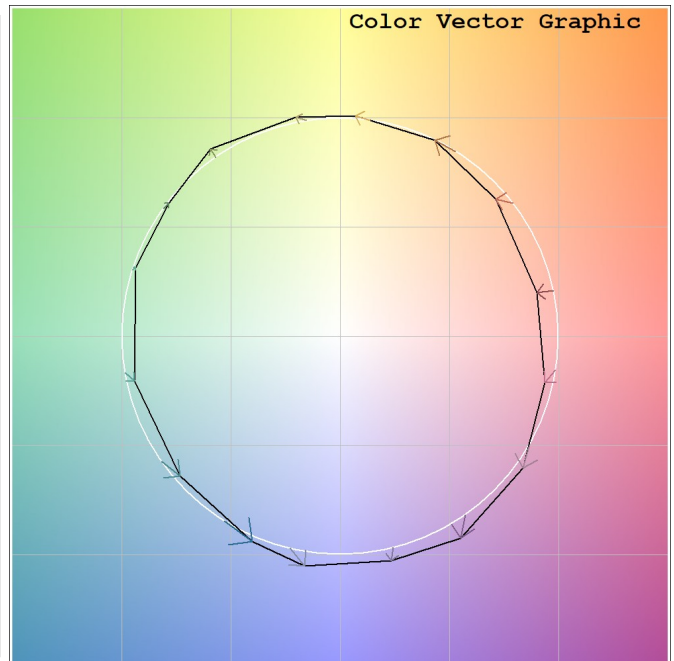
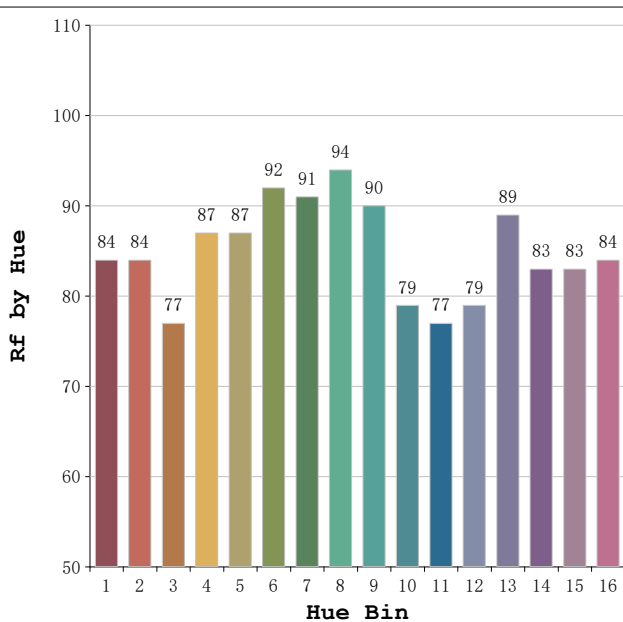
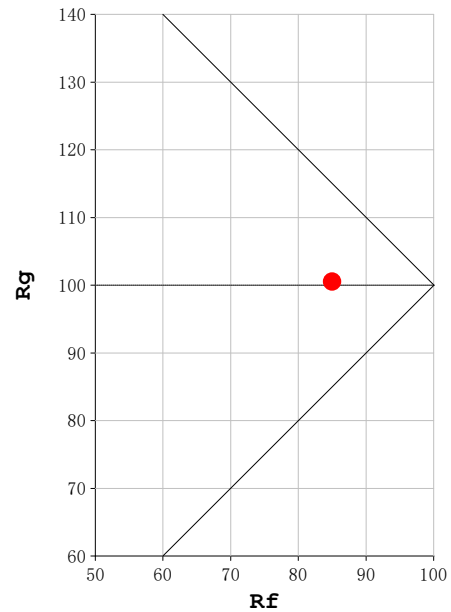
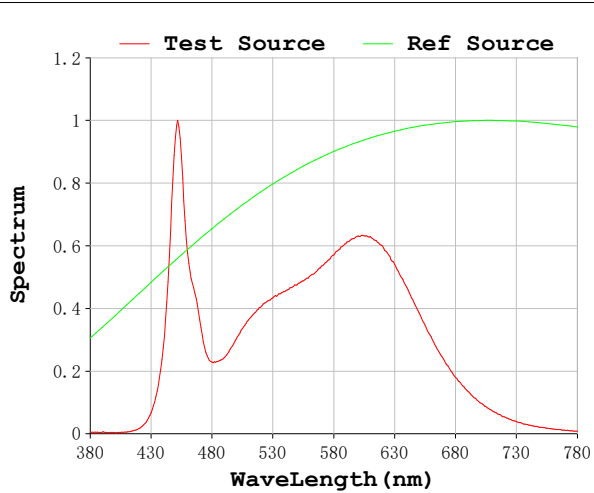
V = 23.998 V I = 0.4200 A P = 10.08 W PF = 1.000

Status: Integral T = 3478 ms Ip = 49510 (76%)

Model: Neón Dakar 4000K
Tester:MªAngeles
Temperature:20Deg
Manufacturer:Luz Negra

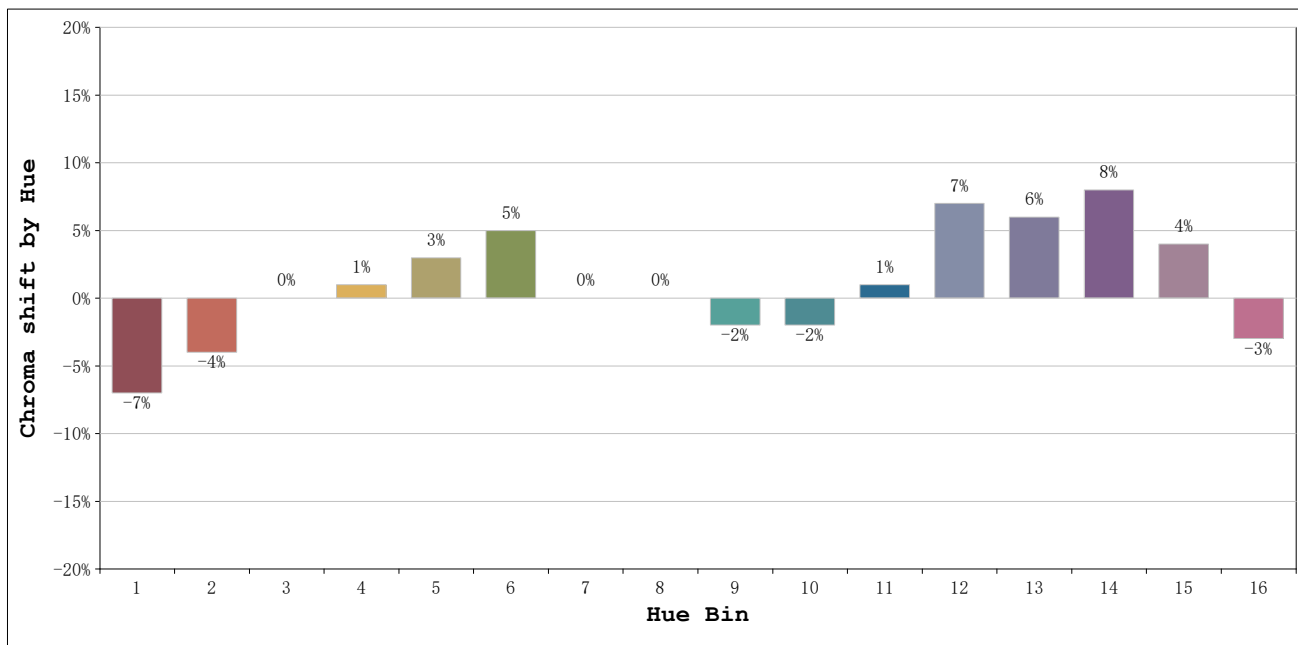
Number: 10.274
Date:2025-02-13 12:51:12
Humidity:50%
Remarks:100cm de neón

Rf: 85 **CCT: 4089 K** **u': 0.2294**
Rg: 101 **Duv: -0.0100** **v': 0.4877**



Model: Neón Dakar 4000K
 Tester: M^a Angeles
 Temperature: 20Deg
 Manufacturer: Luz Negra

Number: 10.274
 Date: 2025-02-13 12:51:12
 Humidity: 50%
 Remarks: 100cm de neón



Hue Bin	Hue Angle	Rf	Graphic shift(%)	
			Chroma	Hue
1	0.0° - 22.5°	84	-7	1
2	22.5° - 45.0°	84	-4	6
3	45.0° - 67.5°	77	0	11
4	67.5° - 90.0°	87	1	7
5	90.0° - 112.5°	87	3	5
6	112.5° - 135.0°	92	5	0
7	135.0° - 157.5°	91	0	-2
8	157.5° - 180.0°	94	0	-1
9	180.0° - 202.5°	90	-2	4
10	202.5° - 225.0°	79	-2	10
11	225.0° - 247.5°	77	1	16
12	247.5° - 270.0°	79	7	8
13	270.0° - 292.5°	89	6	-1
14	292.5° - 315.0°	83	8	-7
15	315.0° - 337.5°	83	4	-10
16	337.5° - 360.0°	84	-3	-5

Model: Neón Dakar 4000K
 Tester: M^a Angeles
 Temperature: 20Deg
 Manufacturer: Luz Negra

Number: 10.274
 Date: 2025-02-13 12:51:12
 Humidity: 50%
 Remarks: 100cm de neón